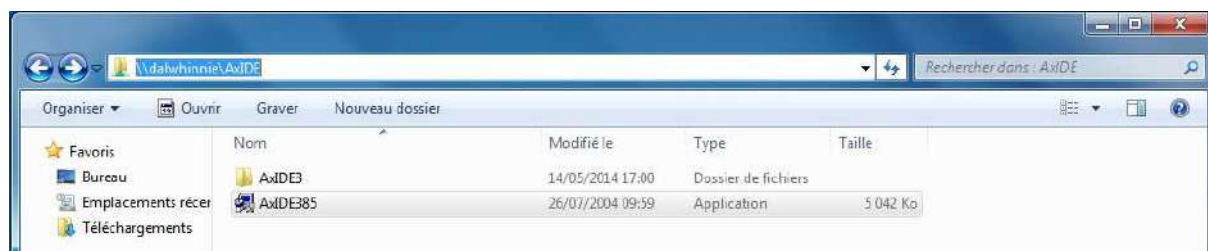


PROCEDURE UTILSATEUR POUR LE LOCICIEL AxIDE

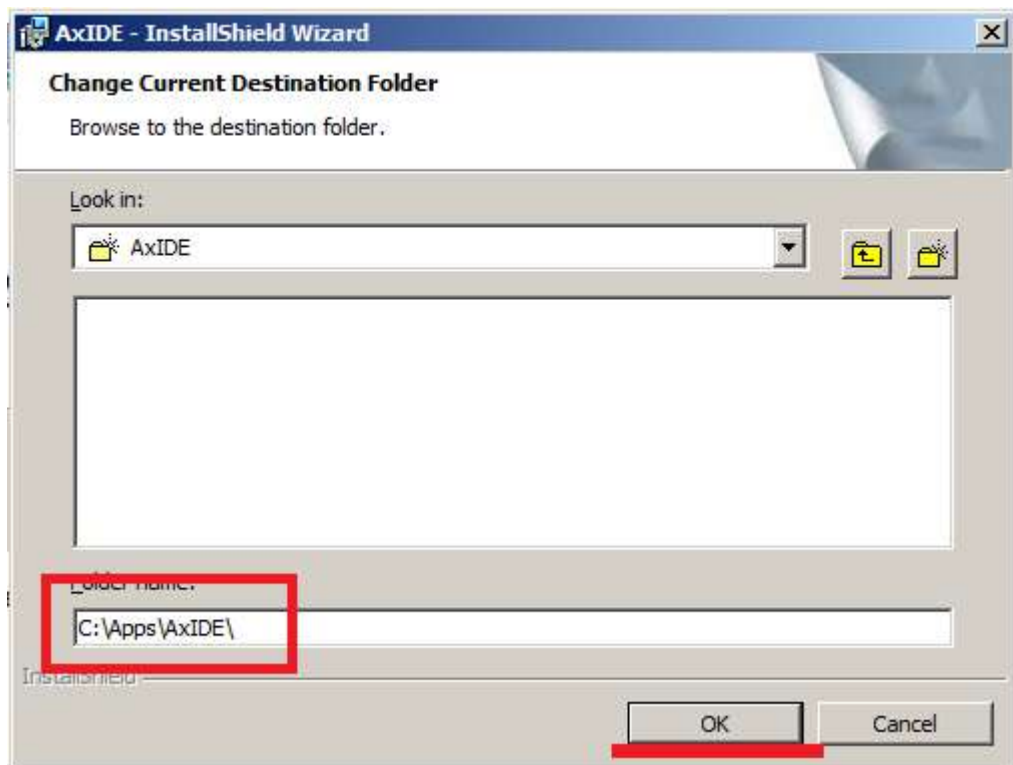
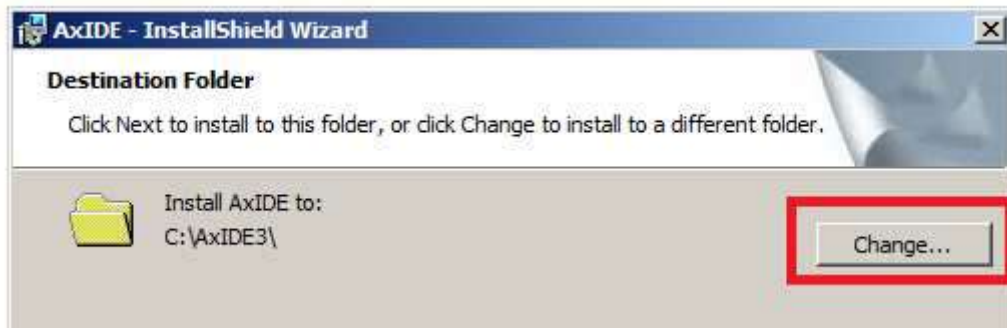
1/ RE-installer AxIDE dans « c:\apps\AxIDE\ »

Le logiciel ne fonctionnant que pour l'utilisateur qui l'a installé, chaque étudiant doit le réinstaller avant utilisation.

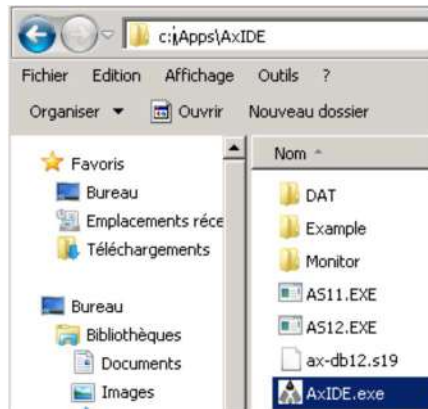
La source d'installation est sur <\\dalwhinnie\AxIDE>



La destination de l'installation est « C:\APPS\AxIDE\ », à sélectionner via le navigateur de fichier du logiciel d'installation

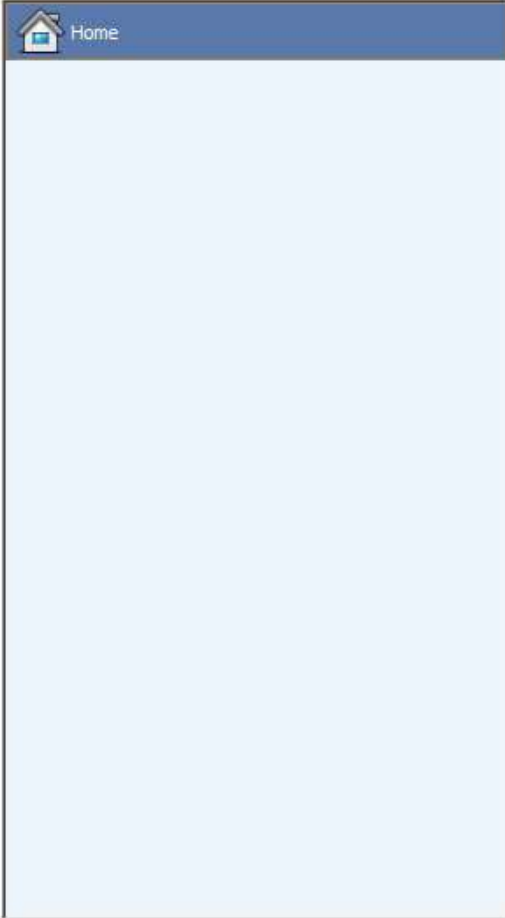


2/ Lancer AxIDE sur le poste physique



3/ Lancer VMWARE :





Welcome to VMware Player



Create a New Virtual Machine

Create a new virtual machine, which will then be added to the top of your library.



Open a Virtual Machine

Open an existing virtual machine, which will then be added to the top of your library.



Upgrade to VMware Workstation

Get advanced features such as snapshots, developer tool integration, and more.



Help

View VMware Player's help contents.



This product is not licensed and is authorized for non-commercial use only. For commercial use, purchase a license. [Buy now.](#)

